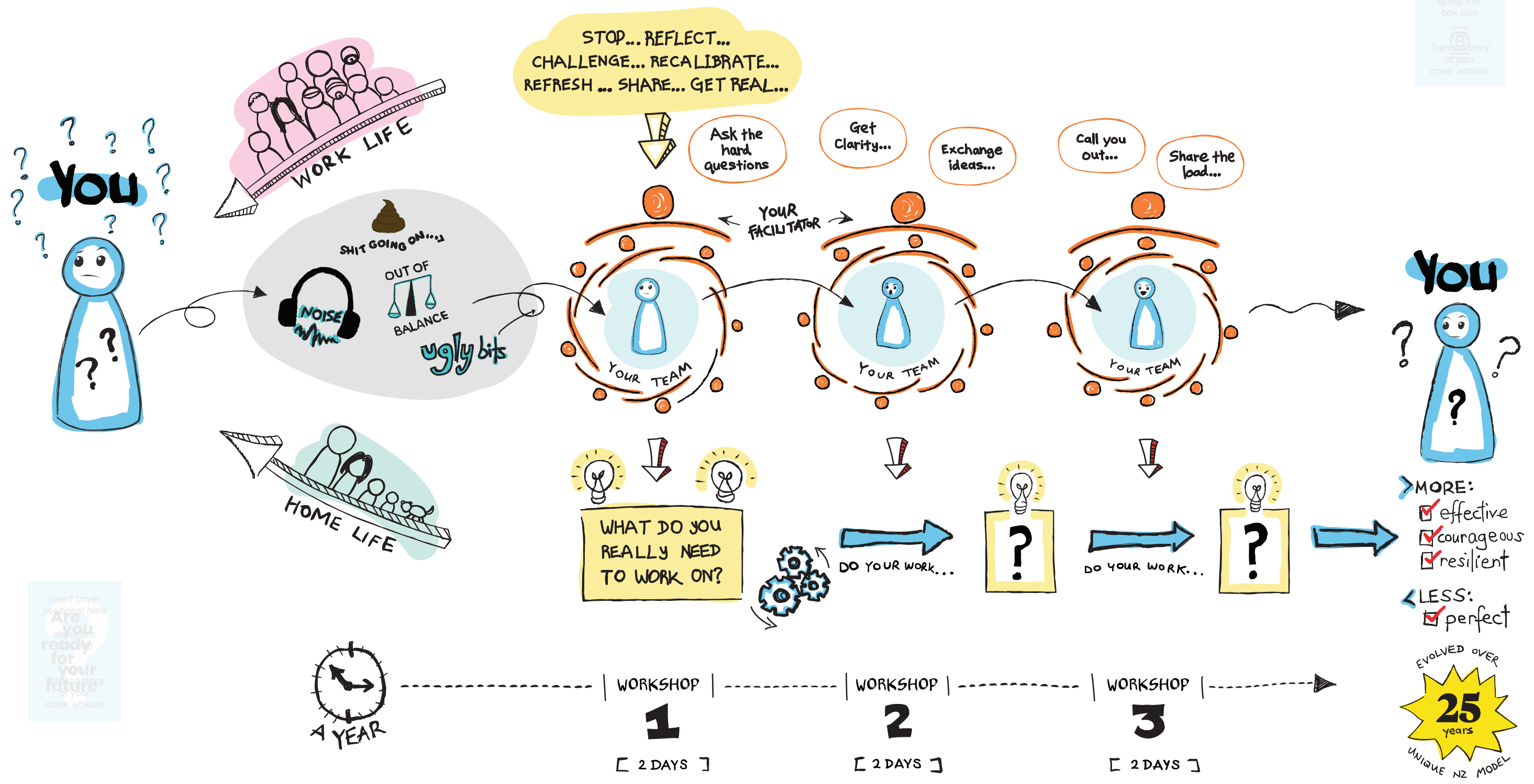


EVOLVE YOURSELF AND OTHERS...



insert cover
positional here
Collective
Intelligence
about this
box size
Certified
Transparency
of your
cover artwork

insert cover
positional here
Are you
ready
for your
future
Transparency
of your
cover artwork

Are you in?

We want **YOU** in the Collective Intelligence community if you have these attributes:

Competent

**Do you ask searching questions?
Are you open to learning
and unlearning?**

In your team, you'll be challenged to collaborate and collide in a fun, safe and respectful space. Grow by tackling the tough stuff in ways that accelerate your personal and professional growth and help you realise your potential. Our credibility is clear. We have hundreds of high-functioning people turning up for workshops guided by our professional facilitators, three times a year. Members typically stay with us for six to seven years.

"My host day was confronting and honest – far more than anyone has ever been with me throughout my life."

ENTREPRENEUR, ADVENTURE PARK DEVELOPER

Ambitious

**Are you ready to evolve yourself
and others? To be uncomfortable?
To be challenged?**

We will make sure that your view of the world is stretched. You'll become more effective in your professional and personal life and you'll get feedback that no one else will give you. It's a uniquely New Zealand approach to leadership that we've been distilling for the past 25 years.

"It challenges me to be the best version of 'me' I can, and by my choice."

SENIOR MANAGER, ADVERTISING AGENCY

Curious

**Do you want to seek out other
people's world views and explore
how they can enrich yours?**

The diversity we cultivate in our teams offers you a powerful and unique peer-to-peer learning opportunity. Hanging out with your own kind is great – but not evolutionary! We equip you to change yourself and be able to adapt to a world that is rapidly evolving.

"My awareness of others is far greater today, the exposure to different viewpoints is changing my level of empathy."

AWARD-WINNING ORGANIC DAIRY FARMER

Authentic

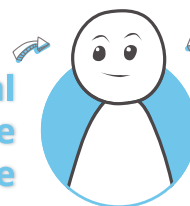
Do you have the guts to be yourself?

We don't do virtual or online workshops. Face-to-face engagement is where the magic happens. Your team is hand-crafted by us to deliver value and in return your team expects you to offer up your genuine self – no facades. You map out your own development program with the support of your teammates and facilitator.

"I'm gaining fresh perspective into my situation. It is hard to ask yourself the right questions to dig into the answers."

**BUSINESS DEVELOPMENT MANAGER,
MANUFACTURING**

**Unlock your potential
Lead change
Invest in your future**



**Join our community of
like-hearted people evolving
together to create a better world**

Are you competent, ambitious, curious, and authentic? Come say hello at www.collectiveintelligence.co.nz

The booklet is printed using a carbon neutral certified print service. Soar measures all emissions involved in production, including raw materials, energy consumed, transport and distribution. The carbon footprint of the booklet is audited by Totu Envirocare.



**carbon
Zero**
PAS 2050
certified
service